



DataPaq™ Cube Rack Scanner

Scans *all* SBS racks and Cryoboxes

The Ziath DataPaq™ Cube Rack Scanner is a fast camera based scanner capable of scanning both SBS racks and Cryoboxes. The patented device is capable of image and decoding a rack in 1-2 seconds on a *normal* computer (no high spec computer needed). With minimal cabling, DataPaq intuitive and flexible software (including free lifetime upgrades); the Cube will handle your sample tracking and biobanking needs for today and tomorrow.



Features

- Compatible with 24, 48, 96 & 384 racks
- Compatible with 81 and 100 place cryoboxes
- Smallest 'scan all' scanner on the market
- Compatible with all tube manufacturers
- Export data to Excel, Text, XML & Database
- Operating systems: Windows 8, 7 & XP
- Compact: 152 x 174 x 146mm (WxDxH)
- Suitable for benchtop & integration
- Durable construction - 2 year guarantee
- Free software upgrades for life
- Simple installer; no dongles required
- DB connectivity: All major vendors



PRACTICAL INNOVATION

DataPaq™ High Speed Single Rack Scanner

Easy Set-Up and Easy To Use

The DataPaq™ Cube Scanner offers easy set-up, straight out of the box, delivered pre-calibrated you only need to plug it in.

The scanner can scan all SBS racks including non standard ones and Cryoboxes with the same unit.

Our DataPaq™ software makes it simple to export to Excel, XML, JSON or direct to database and scanned images can also be saved.

The DataPaq™ Cube can be used with our Linear Reader to scan the barcode on the side of the rack; also allowing hands-free operation with our Activator technology.

Intelligent Scan Information

The software displays the results of the scan and can identify the difference between a correctly scanned tube (green ring) a damaged tube (red ring) and missing tube (grey ring).

Cryoprotection™ Option

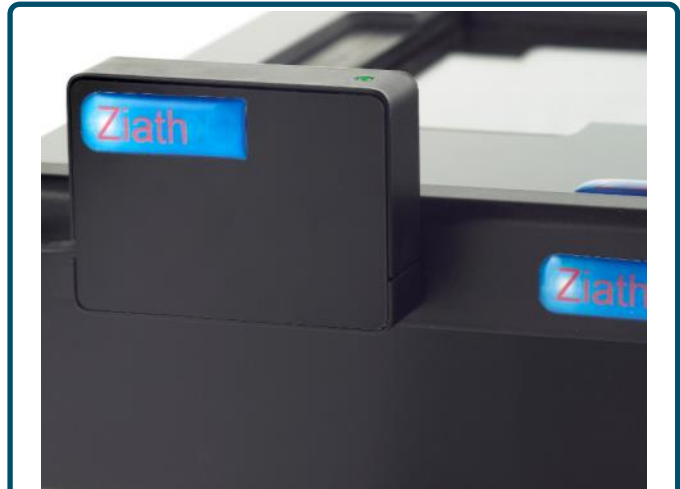
The occurrence of condensation whilst scanning tubes straight from cryogenic storage is well known. Ziath's cryoprotective coating eliminates the occurrence and ensures uninterrupted scanning. The technique is passive so does not add heat or blow warm air onto the rack or scanner

Ordering Information

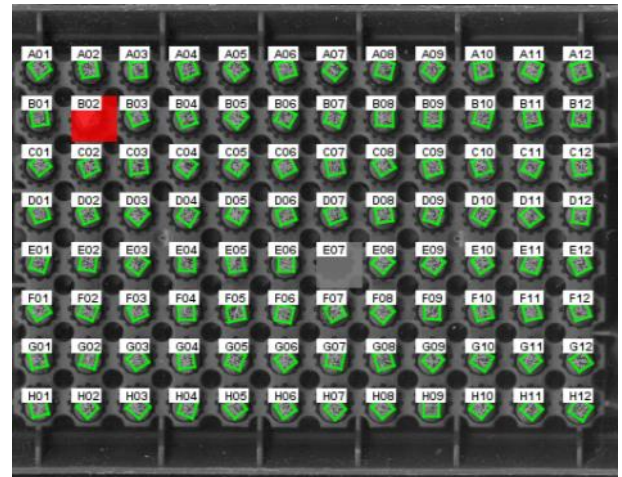
| Code | Description | Quantity |
|---------------|---|----------|
| ZTS-CUBE | DataPaq™ Cube Rack Scanner | 1 |
| ZTS-CUBE-80 | DataPaq™ Cube Rack Scanner with Cryoprotection™ | 1 |
| ZTS-1DR2-CUBE | DataPaq™ Cube Linear Rack Scanner Version 2 | 1 |

2015_1

Ziath Ltd, The Studio, High Green, Great Shelford, Cambridge, CB22 5EG, UK
Tel: +44 (0) 1223 655577 Fax: +44 (0) 1223 790069 Email: info@ziath.com
www.ziath.com



The new Linear Barcode Rack Scanner is easy to install and use



DataPaq™ software gives intelligent scan information.



Scanner with Cryoprotection™



Scanner without Cryoprotection™